

Year 2 Homework 7.3.19

Year 2 parents,

In Year 2, we are reading George's Marvellous Medicine. We are looking at the characters George and Grandma and how they have different points of views and ideas. We will be writing a diary entry for George who will describe his Gran and talk about how he feels when left at home with Granny whilst mum goes shopping. Please read our mentor text from Grandma's point of view about George looking after her.

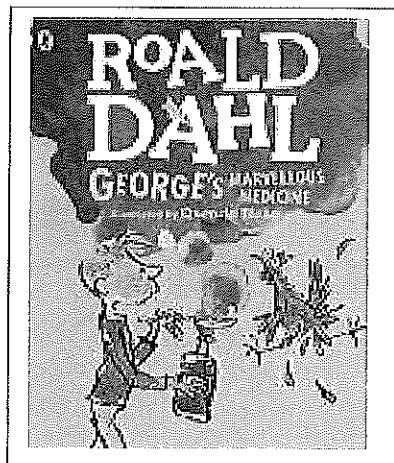
Dear diary

Today is Saturday and has been the worse day ever. How could I forget to fetch Grandma her favourite pie for our scrumptious dinner? I wanted to cheer her up because she was in one of her sleepy, grumpy moods when she came downstairs this morning. George, bless him, looked after her as she snoozed in her favourite ancient, spring chair. All day long she just sits in that chair next to the window. Suddenly she will glare out of one wicked eye and shout go away! She likes to look out and watch the world go by and tell us all how awful all the world has become. What a boring thing to do!

George said she had told him to stop growing and to do this he must eat cabbage. Why would she say that? Grandma has very strange views about what she thinks is right and wrong. George said that she thinks children have bad habits like disobedience, sloppiness and greed.

When I came home he looked like he had been shaking with fright. She always seems so kind when I see her chatting away to George but sometimes her words do scare him.

I wish she wouldn't be so unkind.





HOMEWORK PROJECT

Oh no!!

Goldilocks has made a mess! The poor three bears.

Can you make a setting of a room from their house to show the mess she has made. It could be the broken chairs in the living room or the messy porridge bowls in the kitchen!

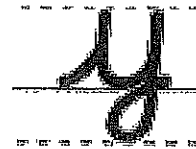
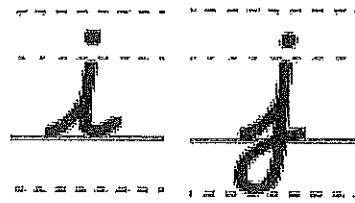
Please bring into school on the same day we will be sharing them with you...

Tuesday 2nd April at 2.30.

Handwriting

In Year 2 we are having a big focus on our handwriting.

Please continue to help your child to correctly form each letter and make sure they start each letter in the right place and is the correct size compared to other letters.



SPELLINGS

These words change spellings when the 'es' is added to them, they drop the 'y', change to an 'i' and add 'es'.

Also months of the year.

tries *January*

flies *February*

replies *March*

copies *April*

babies

carries

They will be tested every Friday.

Reminders

PE – swimming

We will go swimming every Wednesday afternoon after half term. Please make sure your child has their swimming kit every week.

Toast and juice money

Must be paid on a Monday morning in an envelope with your child's name, amount and what the money is paying for. Thank you.

Teacher training day

School is closed to children on **Monday 11th March**. We will see you all on Tuesday.

Parents evening

Next week on Tuesday 12th March and Wednesday 13th March.